

East Coast Young Gun Championships

Killington, VT

Mar 18, 2017 (Sat) (N1429) (N1429)

Official Saturday Aerials

Head Judge: O'LEARY, Michael
 Chief of Comp: DAMORE, Peter
 T.D.: SOAR, Thomas
 Chief of Scoring: MORSEY, Chase
 Judge 1(T&A): O'LEARY, Michael
 Judge 2(T&A): MCKEE, Matthew
 Judge 3(Land): YOUNG, Shirley

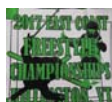
 Head Judge

 Chief of Scoring

 T.D.

Sat Aerials Event Date: Mar 18, 2017 (Sat)
 Female/Male (By Score) Time: 4:24 pm
 Killington, VT East Coast Young Gu

No	Bib Name	Gp	Rep	J.1	J.2	J.3	Judge	Manuvr	DofD	Run	Event
1	72 LUPTAKOVA, Suzanna	F11	Wva	9.8	9.8	9.9	29.50	N	1.560	46.02	
				9.8	9.4	9.6	28.80	S	1.600	46.08	92.10
2	15 BYRNES, Madeline	F11	Kms	9.1	9.0	9.4	27.50	S	1.600	44.00	
				9.3	9.2	9.4	27.90	D	1.620	45.19	89.19
3	93 ROPER, Maggie	F11	Wva	8.7	10.0	9.4	28.10	N	1.560	43.83	
				8.9	9.2	8.0	26.10	S	1.600	41.76	85.59
4	18 CIAGLO, Megan	F11	Kms	8.7	9.4	9.3	27.40	S	1.600	43.84	
				7.4	7.9	7.4	22.70	3	1.780	40.40	84.24
5	42 HENRICH, Anneliese	F11	Buf	8.2	8.4	8.9	25.50	S	1.600	40.80	
				9.1	8.4	8.9	26.40	D	1.620	42.76	83.56
6	30 DOWLING, Sophia	F11	Cva	8.6	8.9	8.7	26.20	S	1.600	41.92	
				8.5	9.2	8.7	26.40	N	1.560	41.18	83.10
7	77 MULCAHY, Gina	F11	Wva	9.3	8.8	9.4	27.50	S	1.600	44.00	
				8.5	7.8	8.4	24.70	N	1.560	38.53	82.53
8	76 MARINELLA, Grace	F09	Kms	8.8	8.7	9.2	26.70	S	1.600	42.72	
				7.0	6.8	5.9	19.70	TS	1.700	33.49	76.21
9	27 DIPIETRO, Carmen	F11	Kms	8.0	7.2	7.9	23.10	S	1.600	36.96	
				7.4	7.8	7.6	22.80	g	1.630	37.16	74.12
10	55 JOHNSON, Victoria	F09	Kms	7.3	7.0	7.1	21.40	S	1.600	34.24	
				7.1	8.1	7.7	22.90	D	1.620	37.09	71.33
11	95 SAITOW, Taylor	F11	Lon	8.5	7.8	8.4	24.70	S	1.600	39.52	
				5.7	6.7	6.9	19.30	D	1.620	31.26	70.78
12	14 BYRNES, Allison	F09	Kil	7.7	8.1	7.9	23.70	S	1.600	37.92	
				6.0	6.7	5.8	18.50	g	1.630	30.15	68.07
13	70 LIVERNOIS, Kira	F09	Abe	8.0	8.2	7.6	23.80	N	1.560	37.12	
				5.8	5.4	6.4	17.60	g	1.630	28.68	65.80
14	26 DE LUNA, Stephanie	F11	Kms	8.0	8.9	8.6	25.50	S	1.600	40.80	
				4.4	6.0	4.8	15.20	g	1.630	24.77	65.57
15	22 CRAGG, Reid	F09	Wva	7.5	6.5	6.4	20.40	S	1.600	32.64	
				7.0	7.1	6.8	20.90	N	1.560	32.60	65.24
16	104 STORCH, Emily	F09	Kms	7.8	8.2	8.0	24.00	S	1.600	38.40	
				5.4	5.8	5.4	16.60	T	1.600	26.56	64.96
17	7 BARNUM, Sarah	F11	Hv	6.8	6.5	6.1	19.40	S	1.600	31.04	
				6.0	6.8	5.8	18.60	T	1.600	29.76	60.80
18	82 NUNEZ ALVAREZ, Sky	F09	Msn	8.4	8.1	8.4	24.90	S	1.600	39.84	
				4.3	4.1	4.6	13.00	N	1.560	20.28	60.12
19	83 O'NEILL, Emer	F11	Wva	6.1	6.2	6.7	19.00	S	1.600	30.40	
				6.2	6.4	6.1	18.70	Tk	1.580	29.54	59.94
20	44 HOLMES, Sydney	F09	Wva	5.2	6.9	4.8	16.90	S	1.600	27.04	
				5.1	5.6	6.1	16.80	N	1.560	26.20	53.24



No	Bib Name	Gp	Rep	J.1	J.2	J.3	Judge	Manuvr	DofD	Run	Event
===	====	==	===	===	===	===	=====	=====	=====	=====	=====
1	34 GAUDET, Zachary	M11	Wbk	9.2	9.6	9.3	28.10	bPX	2.120	59.57	
				9.1	9.5	9.0	27.60	3g	1.910	52.71	112.28
2	33 GARBER, Connor	M11	Msn	9.8	9.7	9.5	29.00	bPX	2.120	61.48	
				8.4	9.0	9.0	26.40	3X	1.900	50.16	111.64
3	19 CIAGLO, Owen	M09	Kms	9.0	8.7	9.2	26.90	TS	1.700	45.73	
				9.0	9.0	8.5	26.50	3	1.780	47.17	92.90
4	11 BAVARO, Gaetano To	M11	Wva	9.1	8.8	8.4	26.30	S	1.600	42.08	
				9.4	9.3	9.0	27.70	3	1.780	49.30	91.38
5	80 MULLALY, Jack	M11	Lon	8.9	8.5	8.3	25.70	TS	1.700	43.69	
				9.1	8.6	8.6	26.30	3	1.780	46.81	90.50
6	31 EGAN, Jack	M11	Car	8.9	9.0	9.5	27.40	3	1.780	48.77	
				7.1	7.4	7.3	21.80	3g	1.910	41.63	90.40
7	37 GORDON, Kyle	M11	Kms	9.4	9.4	9.6	28.40	S	1.600	45.44	
				8.8	8.6	8.8	26.20	D	1.620	42.44	87.88
8	12 BLAKEMAN, Noah	M11	Wva	8.5	8.7	8.9	26.10	3	1.780	46.45	
				8.4	8.8	8.2	25.40	S	1.600	40.64	87.09
9	64 LEWIS, Camden	M09	Gsr	9.1	8.9	8.9	26.90	S	1.600	43.04	
				8.8	8.8	9.5	27.10	D	1.620	43.90	86.94
10	67 LITTLEFIELD, Chase	M11	Car	8.5	8.8	9.3	26.60	S	1.600	42.56	
				8.5	8.7	8.6	25.80	TS	1.700	43.86	86.42
11	73 MAHADY, Henry	M09	Lon	8.7	9.0	9.0	26.70	T	1.600	42.72	
				9.3	8.9	8.9	27.10	S	1.600	43.36	86.08
12	48 IANCHULEV, Alexand	M11	Wva	8.7	9.2	9.7	27.60	N	1.560	43.05	
				8.4	8.1	9.3	25.80	S	1.600	41.28	84.33
13	101 SOCHA, Bennett	M11	Hv	8.9	8.9	8.4	26.20	D	1.620	42.44	
				8.3	8.0	7.9	24.20	SS	1.700	41.14	83.58
14	92 ROCK, Eli	M11	Wva	8.2	7.7	8.4	24.30	3	1.780	43.25	
				8.3	8.5	7.9	24.70	S	1.600	39.52	82.77
15	21 CRAGG, Jack	M11	Wva	7.8	7.8	6.9	22.50	TS	1.700	38.25	
				8.9	8.7	9.2	26.80	S	1.600	42.88	81.13
16	50 JAMIESON, Ryan	M11	Kms	6.3	7.1	7.0	20.40	TS	1.700	34.68	
				8.4	8.2	8.8	25.40	3	1.780	45.21	79.89
17	89 PRESTON, Harper	M09	Wva	7.8	7.5	8.6	23.90	N	1.560	37.28	
				8.3	8.0	8.3	24.60	S	1.600	39.36	76.64
18	32 FLYNN, Brayden	M09	Bm	7.8	8.3	8.3	24.40	S	1.600	39.04	
				6.9	7.5	7.4	21.80	SX	1.720	37.49	76.53
19	68 LIVERNOIS, Hayes	M11	Abe	6.5	6.4	7.2	20.10	3	1.780	35.77	
				7.3	7.2	8.4	22.90	g	1.630	37.32	73.09
20	94 ROYALL, Tate	M11	Car	7.0	7.5	7.3	21.80	N	1.560	34.00	
				7.9	8.5	8.0	24.40	S	1.600	39.04	73.04
21	54 JOHNSON, Gabriel	M11	Kms	9.3	9.4	9.7	28.40	gg	1.760	49.98	
				4.2	3.9	4.0	12.10	3	1.780	21.53	71.51
22	74 MAHADY, Luke	M11	Lon	6.8	7.5	7.0	21.30	S	1.600	34.08	
				7.0	6.7	6.8	20.50	3	1.780	36.49	70.57
23	88 PIRAIN, Reese	M11	Sev	7.5	8.0	7.5	23.00	N	1.560	35.88	
				5.1	5.7	6.4	17.20	S	1.600	27.52	63.40
24	71 LONG, Peyton	M11	Wva	6.8	7.2	6.3	20.30	T	1.600	32.48	
				6.4	5.8	4.8	17.00	TS	1.700	28.90	61.38
25	23 D'AMICO, Nikola	M11	Hun	7.6	7.4	8.0	23.00	S	1.600	36.80	
				4.7	5.5	4.8	15.00	T	1.600	24.00	60.80
26	4 ANANTH, Toshi	M11	Lon	8.6	8.5	9.4	26.50	S	1.600	42.40	
				2.0	3.3	2.8	8.10	g	1.630	13.20	55.60
27	107 WARNER, Andreas	M09	Lon	4.9	5.0	4.9	14.80	S	1.600	23.68	
				3.5	3.9	3.7	11.10	X	1.620	17.98	41.66
28	49 JAMIESON, Joshua	M09	Kms	7.7	7.2	7.5	22.40	S	1.600	35.84	
								S	1.600		35.84

Winfree 2017.16, B Rules, Rand=714 @ 8:50a(17-3-18), A, Not Elim

