

East Coast Junior Championships

Killington, VT

Mar 18, 2017 (Sat) (N0258) (N0257)

Official Moguls

Head Judge: LOUNSBURY,Scott
Chief of Comp: DAMORE,Peter
T.D.: SOAR,Thomas
Chief of Scoring: MORSEY,Chase
Judge 1(T&L): MILES,Rebecca
Judge 2(T&L): KASPER,Christopher
Judge 3(Air): LOUNSBURY,Scott

Course: High Line Super Trail
Length: 183 m
Pace: Male = 23.13, Female = 25.38

Head Judge

Chief of Scoring

T.D.

Moguls Event Date: Mar 18, 2017 (Sat)
Female/Male (By Score) Time: 4:21 pm
East Co

No	Bib Name	Gp	Rep	T&L-->			Air-->				Judge	Time		Pts	Run	Event
				J.1	J.2	T&L	J.3	Jumps	DofD	Airs		====	====			
1	43 DIETRICH, Annie	F15	Hmt	14.6	15.6	45.3	6.9	S	0.510	6.41	51.71	29.99	10.18	61.89		
				8.0	7.2	22.8	5.7	D	0.510							
							3.1	S	0.510	3.77	26.57	45.13		26.57	61.89	
							4.3	D	0.510							
2	81 LEWIS, Taylor	F15	Gsr	13.8	14.1	41.8	5.9	S	0.510	5.64	47.49	28.16	12.49	59.98		
							5.5	T	0.480							
				14.2	13.2	41.1	6.0	S	0.510	6.90	48.00	31.06	8.83	56.83	59.98	
							4.8	3	0.800							
3	8 BACON, Isabella	F13	Hv	12.6	12.7	37.9	5.9	3	0.800	7.62	45.57	29.74	10.50	56.07		
							5.7	S	0.510							
				12.8	12.9	38.6	5.1	3	0.800	8.26	46.81	29.50	10.80	57.61	57.61	
							8.2	S	0.510							
4	42 DEWEESE, Brooke	F15	Nys	11.7	12.1	35.7	4.1	TS	0.630	5.53	41.23	30.41	9.65	50.88		
							5.8	S	0.510							
				12.2	13.0	37.8	4.6	TS	0.630	6.20	44.00	30.24	9.87	53.87	53.87	
							6.5	S	0.510							
5	131 YOUNG, Zoey	F15	Buf	1.0	9.8	16.2	5.9	TS	0.630	7.33	23.53	31.64	8.10	31.63		
							7.1	S	0.510							
				13.0	11.0	36.0	5.8	S	0.510	6.10	42.10	29.31	11.04	53.14	53.14	
							5.0	TS	0.630							
6	25 CEHELKY, Carly	F15	Wva	10.6	12.3	34.3	6.1	S	0.510	6.32	40.67	33.91	5.24	45.91		
							5.1	TS	0.630							
				13.2	12.5	38.5	6.3	S	0.510	6.36	44.91	33.52	5.73	50.64	50.64	
							5.0	TS	0.630							
7	96 OBERHOLZER, Patsy	F13	Hv	12.1	12.2	36.4	4.0	S	0.510	4.84	41.29	35.03	3.83	45.12		
							5.5	D	0.510							
				13.6	13.0	39.9	5.0	S	0.510	4.59	44.49	33.83	5.34	49.83	49.83	
							4.0	D	0.510							
8	63 HARVEY, Sadie	F15	Gsr	12.2	11.8	36.0	5.7	TS	0.630	6.59	42.59	33.92	5.23	47.82		
							5.9	S	0.510							
				11.6	12.5	36.2	5.5	TS	0.630	6.77	42.92	32.98	6.41	49.33	49.33	
							6.5	S	0.510							
9	10 BALLARD, Estelle	F15	Gsr	12.2	11.3	35.3	6.8	S	0.510	5.72	40.97	31.61	8.14	49.11		
							3.6	TS	0.630							
				4.5	3.4	11.9	4.8	S	0.510	2.44	14.29	38.43		14.29	49.11	
							.0									
10	46 DOWLING, Alexandra	F13	Cva	11.0	11.0	33.0	5.2	S	0.510	5.67	38.67	34.79	4.13	42.80		
							6.3	T	0.480							
				12.2	12.4	36.9	4.2	S	0.510	4.25	41.15	33.23	6.10	47.25	47.25	
							4.4	T	0.480							
11	83 LYNCH, Cassidy	F13	Kms	12.3	12.0	36.5	5.0	S	0.510	5.00	41.45	34.06	5.05	46.50		
							3.9	TS	0.630							
				5.4	4.2	14.4	2.6	S	0.510	4.15	18.55	35.68	3.01	21.56	46.50	
							4.5	TS	0.630							

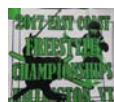
Official Moguls

No	Bib Name	Gp	Rep	T&L-->			Air-->				Judge	Time	Pts	Run	Event
				J.1	J.2	T&L	J.3	Jumps	DofD	Airs					
12	31 COLLINS,Bridget	F15	Buf	11.5	12.0	35.3	4.0	S	0.510	4.74	39.99	34.48	4.52	44.51	
				12.2	11.3	35.3	4.3	TS	0.630	5.09	40.34	33.95	5.19	45.53	45.53
13	124 STUTZMAN,Jessica	F15	Wva	9.5	11.1	30.9	5.1	T	0.480	4.99	35.89	34.84	4.07	39.96	
				11.6	12.0	35.4	5.0	S	0.510	5.17	40.57	34.49	4.51	45.08	45.08
14	19 BUCKMAN,Hayley	F15	Str	2.6	3.0	8.4	2.0	S	0.510	3.85	12.25	51.03		12.25	
				12.8	11.5	36.5	4.5	TS	0.630	5.96	42.41	36.01	2.59	45.00	45.00
15	112 SCHLAMKOWITZ,Jess	F13	Oms	11.6	12.1	35.5	4.1	S	0.510	4.01	39.56	34.74	4.19	43.75	
				8.4	8.5	25.3	4.0	T	0.480	4.22	29.57	32.99	6.40	35.97	43.75
16	26 CELANI,Summer	F13	Hv	9.0	10.0	28.5	4.0	T	0.480	5.38	33.88	35.31	3.47	37.35	
				10.8	11.0	32.7	6.8	S	0.510	4.53	37.23	34.33	4.71	41.94	41.94
17	17 BRODERICK,Morgan	F17	Nys	7.9	7.2	22.7	4.9	S	0.510	3.93	26.58	34.36	4.67	31.25	
				10.8	10.5	32.0	3.0	T	0.480	3.21	35.16	32.81	6.63	41.79	41.79
18	54 FLANAGAN,Elodie	F13	Kms	10.4	11.2	32.4	5.6	S	0.510	5.62	38.02	35.35	3.42	41.44	
				10.2	10.6	31.2	4.4	TS	0.630	5.13	36.33	38.82		36.33	41.44
19	128 VAN DER VOORT,Eli	F15	Str	0.1	0.1	0.3	2.0	T	0.480	3.05	3.35	44.49		3.35	
				9.8	9.7	29.3	4.1	S	0.510	4.59	33.84	32.34	7.22	41.06	41.06
20	94 MORSE,Toril	F15	Wva	8.7	8.1	25.2	4.9	S	0.510	4.26	29.46	35.99	2.62	32.08	
				10.5	11.0	32.3	3.7	T	0.480	4.24	36.49	34.83	4.08	40.57	40.57
21	95 MULLALY,Hannah	F13	Lon	0.4	0.4	1.2	2.8	TT	0.600	3.72	4.92	43.21		4.92	
				11.1	12.1	34.8	4.0	S	0.510	5.37	40.17	39.84		40.17	40.17
22	110 SCHAAB,Zoe	F13	Hv	9.1	8.1	25.8	4.4	S	0.510	4.16	29.96	36.43	2.06	32.02	
				10.4	10.0	30.6	4.0	T	0.480	4.15	34.75	34.02	5.10	39.85	39.85
23	70 KOSINSKI,Charlott	F13	Str	12.0	11.2	34.8	4.0	S	0.510	4.05	38.85	37.65	0.52	39.37	
				6.9	8.0	22.4	4.2	T	0.480	4.74	27.09	37.00	1.34	28.43	39.37
24	56 FUNK,Hailey	F15	Str	0.1	0.1	0.3	3.0	S	0.510	3.51	3.81	44.48		3.81	
				10.0	8.8	28.2	3.9	D	0.510	5.19	33.39	33.99	5.14	38.53	38.53
25	85 MACGREGOR,Sasha	F13	Hmt	9.7	10.1	29.7	5.8	S	0.510	4.97	34.67	37.17	1.13	35.80	
				10.2	11.1	31.9	4.4	N	0.460	4.63	36.58	36.99	1.36	37.94	37.94
26	53 ELLIOT,Madison	F17	Buf	10.3	9.4	29.6	4.2	S	0.510	4.12	33.67	34.82	4.09	37.76	
				2.0	2.1	6.1	3.9	D	0.510	4.07	10.22	43.10		10.22	37.76
27	29 CHURCH,Teagan	F15	Str	10.1	10.7	31.2	4.1	S	0.510	4.85	36.05	36.96	1.39	37.44	
				8.2	7.2	23.1	6.0	N	0.460	3.51	26.61	36.98	1.37	27.98	37.44
28	20 BUTLER,Brooke	F13	Hv	10.4	9.2	29.4	5.8	S	0.510	5.65	35.05	36.26	2.28	37.33	
				6.7	5.5	18.3	4.3	TS	0.630	3.77	22.07	39.20		22.07	37.33



Official Moguls

No	Bib Name	Gp	Rep	T&L-->			Air-->				Judge	Time	Pts	Run	Event
				J.1	J.2	T&L	J.3	Jumps	DofD	Airs					
29	75 LADUE,Ruby	F15	Nys	11.5	10.0	32.3	3.9	TS	0.630		36.78	39.95		36.78	
				9.9	10.7	30.9	5.0	S	0.510						
							4.0	D	0.510	4.69	35.59	37.87	0.25	35.84	36.78
							5.2	S	0.510						
30	33 COLTMAN,Brieanna	F15	Str	8.6	10.0	27.9	5.0	N	0.460	5.15	33.05	37.30	0.97	34.02	
							5.6	S	0.510						
				10.6	8.6	28.8	5.0	N	0.460	4.95	33.75	36.06	2.53	36.28	36.28
							5.2	S	0.510						
31	115 SIMON,Valerie	F13	Oms	10.3	10.1	30.6	3.6	S	0.510	3.41	34.01	36.34	2.18	36.19	
							3.3	T	0.480						
				3.1	2.5	8.4	2.9	T	0.480	3.27	11.67	37.66	0.51	12.18	36.19
							3.7	S	0.510						
32	47 DUDA,Jessica	F13	Sev	1.6	2.3	5.8	6.0	S	0.510	5.01	10.86	49.79		10.86	
							3.1	TS	0.630						
				9.9	10.4	30.5	6.0	S	0.510	3.06	33.51	36.09	2.49	36.00	36.00
							.0								
33	114 SIMON,Sydney	F15	Oms	10.0	9.3	29.0	4.4	S	0.510	3.77	32.72	37.24	1.04	33.76	
							3.0	D	0.510						
				9.2	10.1	28.9	3.3	D	0.510	4.02	32.97	36.09	2.49	35.46	35.46
							4.6	S	0.510						
34	107 RYAN,Lilybeth	F13	Gsr	10.7	10.0	31.0	4.2	S	0.510	3.58	34.63	39.92		34.63	
							3.0	T	0.480						
				9.1	9.0	27.2	3.8	TT	0.600	4.26	31.41	38.65		31.41	34.63
							3.9	S	0.510						
35	52 ELLIOT,Chelsea	F13	Buf	9.4	9.6	28.5	4.9	S	0.510	4.50	33.00	45.41		33.00	
							3.2	TS	0.630						
				9.5	10.4	29.8	3.8	S	0.510	4.26	34.11	39.57		34.11	34.11
							3.7	TS	0.630						
36	92 MAYER,Nicole	F13	Spe	3.4	2.0	8.1	2.7	S	0.510	3.15	11.25	39.87		11.25	
							3.5	D	0.510						
				9.9	9.3	28.8	4.7	S	0.510	4.63	33.43	38.14		33.43	33.43
							4.4	D	0.510						
37	4 ARAVIDES,Alexandr	F13	Str	8.7	8.1	25.2	4.7	S	0.510	4.21	29.41	40.20		29.41	
							3.8	T	0.480						
				8.9	10.1	28.5	5.1	S	0.510	4.37	32.87	39.32		32.87	32.87
							3.7	T	0.480						
38	134 HUBERT,Ashley	F13	Hol	7.6	8.4	24.0	3.9	S	0.510	3.51	27.51	35.17	3.65	31.16	
							3.2	T	0.480						
				2.6	2.0	6.9	3.1	N	0.460	3.29	10.19	39.28		10.19	31.16
							3.9	T	0.480						
39	105 ROTHBERG,Eleanor	F13	Kms	8.4	7.6	24.0	4.1	S	0.510	4.42	28.42	39.89		28.42	
							3.7	TS	0.630						
				8.0	8.4	24.6	4.8	S	0.510	4.58	29.18	37.31	0.95	30.13	30.13
							3.4	TS	0.630						
40	78 LEFEBVRE,Tenley	F13	Kms	7.8	8.0	23.7	4.0	S	0.510	4.00	27.70	40.09		27.70	
							4.1	T	0.480						
				2.0	3.0	7.5	4.0	S	0.510	4.24	11.74	53.70		11.74	27.70
							4.6	T	0.480						
41	35 COOPER,Miah	F15	Str	2.5	3.6	9.1	7.2	S	0.510	5.74	14.89	33.97	5.16	20.05	
							3.3	TS	0.630						
				1.3	2.2	5.3	6.1	S	0.510	5.87	11.12	35.24	3.56	14.68	20.05
							6.0	N	0.460						
42	69 KELSEY,Lila	F15	Wva	0.1	0.2	0.5	1.0	N	0.460	0.97	1.42	1:07.42		1.42	
							1.0	S	0.510						
				4.7	5.1	14.7	3.0	S	0.510	2.01	16.71	48.53		16.71	16.71
							1.0	T	0.480						
43	18 BROWN,Jennifer	F15	Str	2.2	4.0	9.3	3.1	S	0.510	3.82	13.12	37.48	0.74	13.86	
							4.4	D	0.510						
				0.1	0.4	0.8	5.7	S	0.510	2.90	3.65	(none)		3.65	13.86
							.0								
44	87 MAGNOTTI,Julie	F15	Hun	0.1	0.1	0.3	1.7	S	0.510	0.86	1.16	(none)		1.16	
							.0								
				0.1	0.1	0.3	1.0	S	0.510	0.51	0.81	45.53		0.81	1.16
							.0								
1	2 ALVA,Isaac	M13	Bm	16.2	16.6	49.2	7.1	3	0.700	9.93	59.13	25.99	12.04	71.17	



Official Moguls

No	Bib Name	Gp	Rep	T&L-->			Air-->				Judge	Time	Pts	Run	Event
				J.1	J.2	T&L	J.3	Jumps	DofD	Airs					
				12.9	14.4	41.0	6.8	3p	0.730		49.08	25.58	12.61	61.69	71.17
2	99 PETRONE,Jack	M13	Kms	16.7	16.4	49.6	6.4	3	0.700	8.13	57.20	24.87	13.59	70.79	
				14.2	14.6	43.2	5.0	3p	0.730		51.84	24.79	13.70	65.54	70.79
3	76 LAMLEIN,Raymond	M13	Kms	15.6	16.2	47.7	6.8	XS	0.560	8.49	56.19	26.51	11.32	67.51	
				12.4	12.1	36.8	6.7	3	0.700		41.64	24.17	14.56	56.20	67.51
4	126 SWITZER,Ian	M15	Wva	14.3	15.1	44.1	5.6	TS	0.530	7.34	51.44	25.48	12.74	64.18	
				7.8	8.0	23.7	6.0	3p	0.730		28.96	24.02	14.76	43.72	64.18
5	39 CULLINANE,Patrick	M15	Spe	15.1	14.0	43.7	7.4	3	0.700	8.88	52.53	27.13	10.46	62.99	
				14.6	14.4	43.5	7.4	TT	0.500		50.42	28.87	8.05	58.47	62.99
6	24 CANCELLA,Richard	M15	Hmt	14.0	15.1	43.7	5.7	S	0.410	4.76	48.41	25.84	12.25	60.66	
				3.2	2.0	7.8	4.6	TS	0.530		10.58	40.29		10.58	60.66
7	100 REILEY,Camden	M15	Nys	14.9	14.5	44.1	4.7	3	0.700	6.94	51.04	27.96	9.31	60.35	
				14.2	14.0	42.3	5.0	3p	0.730		49.92	27.37	10.13	60.05	60.35
8	22 CALZOLANO,Christi	M13	Str	15.5	15.2	46.0	4.5	TS	0.530	5.98	52.03	29.69	6.92	58.95	
				15.0	15.1	45.2	7.2	TT	0.500		51.09	29.02	7.85	58.94	58.95
9	119 SMITH,Eric	M15	Spe	12.8	13.0	38.7	5.8	TS	0.530	6.20	44.90	27.00	10.64	55.54	
				14.2	14.5	43.0	4.9	TTS	0.640		48.47	27.69	9.69	58.16	58.16
10	40 DAMORE,Tyler	M13	Kms	12.4	13.6	39.0	6.8	3	0.700	9.43	48.43	28.58	8.46	56.89	
				12.0	13.2	37.8	6.4	3p	0.730		46.81	27.23	10.32	57.13	57.13
11	79 LEMLEY,Andrew	M13	Ste	13.0	13.2	39.3	5.0	3	0.700	5.79	45.09	29.30	7.46	52.55	
				14.0	14.7	43.0	5.6	K	0.410		49.69	29.53	7.14	56.83	56.83
12	106 ROTHBERG,Michael	M15	Kms	13.4	13.1	39.8	4.3	X	0.410	4.14	43.89	28.89	8.03	51.92	
				12.9	14.5	41.1	4.5	TS	0.530		47.46	28.59	8.44	55.90	55.90
13	125 SWANK,J.Colton	M13	Sev	12.4	14.0	39.6	5.9	3	0.700	6.90	46.50	28.52	8.54	55.04	
				11.1	13.0	36.2	3.8	3p	0.730		44.07	27.34	10.17	54.24	55.04
14	61 HAMILTON,William	M15	Hv	12.6	12.5	37.7	5.5	3	0.700	6.02	43.67	27.18	10.39	54.06	
				5.8	6.0	17.7	4.1	TS	0.530		23.00	27.59	9.82	32.82	54.06
15	48 DUDA,Tyler	M13	Sev	12.7	12.4	37.7	4.1	TS	0.530	4.97	42.62	31.34	4.64	47.26	
				12.9	14.3	40.8	4.0	3	0.700		46.12	29.01	7.86	53.98	53.98
16	50 EDWARDS,Samuel	M13	Hv	6.2	8.0	21.3	5.0	S	0.410	4.29	25.59	29.73	6.86	32.45	
				12.2	13.2	38.1	4.0	DS	0.560		42.83	26.89	10.79	53.62	53.62
17	127 TOBEY,Gavin	M15	Hun	14.1	13.0	40.7	4.6	TS	0.530	5.23	45.88	29.40	7.32	53.20	
				11.0	12.7	35.5	4.0	3	0.700		40.82	27.62	9.78	50.60	53.20
							4.8	TS	0.530	5.27					
							3.9	3	0.700						



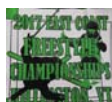
Official Moguls

No	Bib Name	Gp	Rep	T&L-->			Air-->				Judge	Time	Pts	Run	Event
				J.1	J.2	T&L	J.3	Jumps	DofD	Airs					
18	80 LESHEM,Alon	M15	Str	13.0	13.0	39.0	5.1	S	0.410	5.59	44.59	31.19	4.84	49.43	
				14.1	13.0	40.7	5.0	3	0.700	5.8	S	0.410	5.80	46.45	30.10
19	41 DARNLEY,Caleb	M17	Hv	11.0	12.1	34.7	4.6	TTT	0.610	5.87	40.52	28.84	8.10	48.62	
				12.4	13.1	38.3	4.8	TTS	0.640	4.4	TTT	0.610	5.59	43.84	28.85
20	97 OECHSNER,Max	M15	Nys	12.6	13.3	38.8	4.0	TS	0.530	4.12	42.97	28.45	8.63	51.60	
				6.0	7.3	20.0	4.9	S	0.410	3.9	TS	0.530	3.74	23.69	49.39
21	30 COLLINS,Aidan	M15	Buf	5.0	5.3	15.5	4.7	S	0.410	4.79	20.24	34.78		20.24	
				13.0	13.2	39.3	4.1	3	0.700	5.2	S	0.410	5.28	44.58	29.82
22	38 CROTTY,Brandon	M15	Hmt	9.4	10.5	29.8	4.2	TS	0.530	5.09	34.94	28.94	7.96	42.90	
				12.6	12.2	37.2	4.1	3	0.700	3.9	TS	0.530	5.14	42.34	28.39
23	44 DINN,Con	M13	Kms	12.4	13.2	38.4	4.1	S	0.410	3.95	42.35	28.63	8.39	50.74	
				4.1	2.5	9.9	4.3	TS	0.530	5.0	S	0.410	2.05	11.95	34.84
24	32 COLLINS,Liam	M17	Buf	12.2	12.1	36.4	6.0	S	0.410	5.12	41.57	31.73	4.10	45.67	
				12.1	13.6	38.5	3.8	3	0.700	5.2	TT	0.500	5.61	44.16	30.48
25	101 REILEY,Kaylen	M15	Nys	12.2	12.6	37.2	4.3	3	0.700	6.00	43.20	32.50	3.03	46.23	
				12.9	13.3	39.3	4.1	3p	0.730	4.0	3	0.700	5.20	44.50	31.82
26	120 SMITH,Michael	M15	Spe	11.4	11.0	33.6	4.4	T	0.380	4.61	38.21	30.40	5.94	44.15	
				10.9	12.0	34.3	4.2	3	0.700	4.0	TS	0.530	4.99	39.34	28.17
27	117 SLAVICH,Jake	M13	Kms	6.6	7.0	20.4	5.5	S	0.410	2.25	22.65	34.18	0.71	23.36	
				12.2	13.0	37.8	.0			5.8	S	0.410	4.80	42.60	30.77
28	57 GARRISON,Corgan	M17	Hv	6.2	5.2	17.1	6.0	S	0.410	5.19	22.29	1:04.55		22.29	
				10.2	11.5	32.5	3.9	3	0.700	5.2	3	0.700	6.63	39.18	28.56
29	89 MARAVELL,Dante	M13	Gsr	12.8	13.3	39.2	6.0	TS	0.530	5.70	44.85	32.90	2.48	47.33	
				10.8	12.1	34.3	3.6	3	0.700	5.7	TS	0.530	6.03	40.38	31.27
30	71 KOSINSKI,Oliver	M13	Str	10.9	11.7	33.9	3.0	T	0.380	3.94	37.84	33.69	1.39	39.23+3690	
				12.2	12.4	36.9	4.0	3	0.700	5.0	S	0.410	5.69	42.59	32.19
31	6 ARQUIT,Jamie	M13	Kms	10.0	10.1	30.2	5.9	S	0.410	4.10	34.25	28.72	8.26	42.51+3495	
				11.3	12.0	35.0	4.7	N	0.360	4.9	S	0.410	4.17	39.12	29.68
32	23 CANCELLA,Matthew	M13	Hmt	11.9	12.6	36.8	4.0	T	0.380	3.32	40.07	30.38	5.96	46.03	
				11.1	11.6	34.0	4.4	S	0.410	3.6	T	0.380	3.00	37.05	31.70
33	91 MARLEY,Christophe	M15	Bm	12.0	12.2	36.3	4.2	TS	0.530	5.86	42.16	31.91	3.85	46.01	
				11.3	10.5	32.7	5.2	3	0.700	5.1	TS	0.530	6.41	39.11	30.89
34	36 COOPER,Reed	M13	Str	12.1	12.3	36.6	5.2	S	0.410	4.86	41.46	31.80	4.00	45.46	
				0.6	0.1	1.0	3.9	3	0.700	2.7	S	0.410	3.22	4.27	1:14.89



Official Moguls

No	Bib Name	Gp	Rep	T&L-->			Air-->				Judge	Time	Pts	Run	Event
				J.1	J.2	T&L	J.3	Jumps	DofD	Airs					
35	123 STUART, Dakota	M15	Kms	13.6	13.0	39.9	4.0	TS	0.530						
				12.0	11.6	35.4	5.2	S	0.410	4.25	44.15	33.86	1.15	45.30	
							5.6	T	0.380						
							4.9	S	0.410	4.27	39.67	33.63	1.47	41.14	45.30
							4.3	TS	0.530						
36	122 STEVENSON, Ryan	M13	Str	11.9	12.3	36.3	3.3	S	0.410	3.94	40.24	33.01	2.33	42.57	
				12.0	12.6	36.9	4.9	TS	0.530						
							3.6	TS	0.530	4.56	41.46	33.00	2.34	43.80	43.80
							3.8	3	0.700						
37	28 CHRISTIAN, James	M13	Wva	12.4	11.4	35.7	4.4	S	0.410	4.53	40.23	33.39	1.80	42.03	
				0.1	0.1	0.3	3.9	3	0.700						
							3.8	S	0.410	2.95	3.25	1:16.33		3.25	42.03
							3.9	N	0.360						
38	118 SMITH, Caiden	M13	Lon	12.4	12.1	36.8	4.8	T	0.380	4.48	41.23	34.34	0.49	41.72	
				5.2	7.0	18.3	3.8	3	0.700						
							4.9	3	0.700	5.69	23.99	35.42		23.99	41.72
							3.1	3p	0.730						
39	1 ALEXANDER, Digby	M13	Wva	12.4	11.9	36.5	5.0	S	0.410	4.36	40.81	34.25	0.61	41.42	
				5.1	4.1	13.8	3.3	3	0.700						
							4.0	S	0.410	3.46	17.26	36.64		17.26	41.42
							2.6	3	0.700						
40	7 BABB, Kyle	M15	Wva			dnf						(none)		dnf	
				10.6	10.3	31.3	5.9	T	0.380	4.39	35.74	30.75	5.45	41.19	41.19
							4.3	TT	0.500						
41	15 BOYLE, Luca	M15	Str	11.0	11.1	33.2	3.9	TS	0.530	4.41	37.56	32.87	2.52	40.08	
				1.2	0.4	2.4	4.7	TT	0.500						
							4.2	TS	0.530	3.27	5.67	36.03		5.67	40.08
							1.5	3	0.700						
42	67 JONES, Durham	M13	Spe	12.1	11.5	35.4	4.7	TT	0.500	4.62	40.02	34.77		40.02	
				10.7	9.1	29.7	4.3	TS	0.530						
							7.0	TT	0.500	5.77	35.47	32.22	3.42	38.89	40.02
							4.3	TS	0.530						
43	16 BOYLE, Wyatt	M13	Str	10.9	10.3	31.8	3.8	TS	0.530	3.53	35.33	31.76	4.06	39.39	
				7.8	7.4	22.8	4.0	T	0.380						
							3.2	TS	0.530	2.83	25.63	29.98	6.52	32.15	39.39
							3.0	T	0.380						
44	104 ROPER, Colin	M15	Wva	10.0	10.7	31.0	5.0	S	0.410	4.25	35.30	31.78	4.03	39.33	
				0.1	0.2	0.5	4.4	TT	0.500						
							4.1	T	0.380	2.04	2.49	42.74		2.49	39.33
							.7	3	0.700						
45	133 CLAUS, Jacob	M13	Bri	9.2	9.0	27.3	4.0	S	0.410	1.64	28.94	28.32	8.81	37.75	
				9.2	10.7	29.8	.0								
							3.1	TS	0.530	3.19	33.04	30.33	6.03	39.07	39.07
							3.8	D	0.410						
46	98 OXLEY, Evan	M15	Bm	3.4	3.1	9.8	4.3	S	0.410	3.58	13.33	28.88	8.04	21.37	
				7.6	8.5	24.2	2.6	3	0.700						
							4.0	3	0.700	4.48	28.63	27.16	10.42	39.05	39.05
							4.1	D	0.410						
47	34 CONNER, Teddy	M13	Str	5.2	6.0	16.8	2.0	S	0.410	2.72	19.52	40.86		19.52	
				11.9	11.2	34.7	3.6	TS	0.530						
							4.7	S	0.410	3.88	38.53	34.50	0.26	38.79	38.79
							3.7	TS	0.530						
48	14 BIRD, Iain	M13	Bm	9.5	10.2	29.5	3.1	S	0.410	2.90	32.45	31.28	4.72	37.17	
				0.1	0.1	0.3	4.3	T	0.380						
										0.30	(none)			0.30	37.17
49	27 CHIAPPINELLI, Jaso	M13	Str	7.3	7.4	22.0	4.2	S	0.410	3.46	25.51	31.26	4.75	30.26	
				10.6	9.1	29.5	3.3	TS	0.530						
							4.1	S	0.410	3.12	32.67	32.28	3.34	36.01	36.01
							3.8	T	0.380						
50	111 SCHEID, Nicholas	M13	Str	5.3	6.2	17.3	4.0	TS	0.530	4.71	21.96	30.62	5.63	27.59	
				7.6	9.0	24.9	3.7	3	0.700						
							5.0	S	0.410	6.11	31.01	31.65	4.21	35.22	35.22
							5.8	3	0.700						
51	102 ROBINSON, Jaden	M15	Bm	9.7	9.0	28.0	4.6	T	0.380	4.28	32.33	33.97	1.00	33.33	
							6.2	S	0.410						



Official Moguls

No	Bib Name	Gp	Rep	T&L-->			Air-->				Judge	Time	Pts	Run	Event
				J.1	J.2	T&L	J.3	Jumps	DofD	Airs					
				0.1	0.1	0.3	2.1	T 0.380	2.55	2.85	32.24	3.39	6.24	33.33	
							4.3	S 0.410							
52	49 DULKA,Rowen	M15	Nys	6.5	5.3	17.7	2.8	T 0.380	4.00	21.70	49.17		21.70		
							4.2	3 0.700							
				5.9	6.4	18.5	3.6	S 0.410	2.73	21.18	27.66	9.73	30.91	30.91	
							3.5	N 0.360							
53	88 MANGANO,Michael	M13	Buf	8.6	8.0	24.9	4.9	S 0.410	3.63	28.53	36.85		28.53		
							4.3	T 0.380							
				1.8	1.0	4.2	4.0	S 0.410	3.08	7.28	45.11		7.28	28.53	
							4.0	N 0.360							
54	77 LARUSCH,Matthew	M13	Hv	6.7	7.3	21.0	1.0	3 0.700	3.89	24.89	36.00		24.89		
							5.7	DD 0.560							
				2.0	2.1	6.1	6.0	S 0.410	3.97	10.12	39.09		10.12	24.89	
							4.2	N 0.360							
55	9 BALL,Colden	M15	Buf	6.0	7.0	19.5	3.5	S 0.410	3.01	22.51	33.98	0.98	23.49		
							4.4	N 0.360							
				1.3	2.1	5.1	4.6	T 0.380	1.74	6.84	58.97		6.84	23.49	
							.0								
56	72 KRINEY,Jacob	M13	Str	2.8	4.0	10.2	4.0	T 0.380	3.58	13.78	59.17		13.78		
							3.9	TS 0.530							
				0.1	0.1	0.3	5.0	T 0.380	1.90	2.20	53.81		2.20	13.78	
							.0								

Male = 23.13, Female = 25.38

Winfree 2017.16, B Rules, Rand=156 @ 4:14p(17-3-18), M, Not Elim

